



PsyD in Psychodynamic Child Psychology and Psychotherapy

The Reiss-Davis Graduate School



Our doctoral program is unique

- Psychodynamically-oriented
- Neurobiology and trauma-informed
- Child and adolescent focused
- Clinically experienced faculty
- A heritage: 70 years of training mental health professionals through the **Reiss-Davis Child Study Center**

This one-of-a-kind program offers you the opportunity to:

- Learn with **practicing experts** in the field
- Obtain an affordable graduate education
- Receive personal attention as part of a small cohort in seminar style courses
- Learn with coursework delivered in a hybrid format, both onsite and online
- Benefit from a 10-week term including three weekends onsite
- Be able to apply your learning to your daily practice

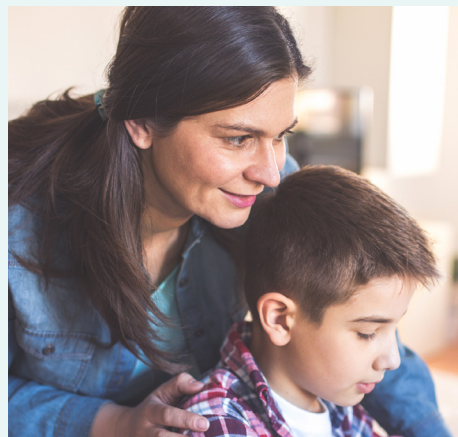
See if our PsyD Program is a good fit!

Two or more checked boxes and our unique program may just be right for you!

- Affordable and conveniently accessible
- Tailored to fit your busy schedule
- Improves your professional practice
- Increases your knowledge about psychodynamically-oriented and neurobiologically-informed child psychology and psychotherapy
- Further sharpens your clinical skills when working with children in your therapeutic cases

Our Mission

To offer mental health providers a unique psychodynamically-oriented and neurobiologically-informed doctoral degree education that equips students with the necessary theory, skills and techniques to better serve and make a significant difference in the mental health needs of children, adolescents and their families with cultural humility and equity.



Other features of our PsyD program

- Three years of core courses
- Plus one year of dissertation completion course
- One residential onsite weekend / month + online contact
- Applicable to your daily practices immediately
- Offers **Professional Development** opportunities
- Conveniently located on a beautiful campus, freeway close in Cheviot Hills

WSCUC Accreditation

Reiss-Davis Graduate School is accredited by the WASC Senior College and University Commission (WSCUC), 1001 Marina Village Parkway, Suite 402, Alameda, CA 94501, 510-748-9001.

RDGS is an approved institution to participate in the Federal Student Loans and Financial Aid Programs.



Quick Facts

104 Credit hours

11 Theoretical knowledge courses

09 Scholarly research and writing courses

16 Psychodynamic child and clinical skills and application courses

**Affordable tuition with scholarships,
Federal Student Loans and Financial Aid**

Licensing Disclosure

The RDGS PsyD degree program does not lead to licensure as a psychologist, although it meets the Board of Psychology's academic requirements for a doctoral program. Graduates must be licensed with the Board of Psychology in order to use the title of psychologist in California. For more information, visit <http://psychology.ca.gov> and www.reissdavis.edu.

BPPE State Approval

The Reiss-Davis Graduate School is a private, non-profit educational institution of higher learning, which is approved by the **Bureau for Private Postsecondary Education (BPPE)**, of the State of California 94909(a)(2) to offer degree programs.

The Reiss-Davis Graduate School is a division of Vista Del Mar Child and Family Services.

Nondiscrimination and Equal Opportunity Statement

<http://www.reissdavis.edu/fairness.html>

Visit our website education.reissdavis.edu